

# LCSRA High School

## REFEREE REPORT

LCSRA - High School

Game # 423475

Org Game ID:

Home Team: Cottage Grove

**4**

Score

Visiting Team: Sweet Home

**2**

Score

Competition/League: LCSRA High School

Season: Fall

Gender/Level/Division: Girls, Varsity, 4A

Date of Game: Thu 9/24/2015

Scheduled Time: 7:00 PM

Field Name: Cottage Grove HS turf

Actual Kick Off:

Field Address: 1375 S. River Rd  
Cottage Grove, OR 97424

End of Game:

Score at Halftime:

Home	Visitor

Center Referee: Paul Clements

AR1: Bryan Clark

4th Official:

AR2: David Ricketts

### Field Information

Field Condition Great

Field Markings

Great

Corner Flags in Place Yes

Goals Secured Yes

Nets in Place

Yes

Approx. # of Spectators

Field Comments:

Marked with black lines

### Home Team Information

On Time Yes

Checked Player Passes

Not Required

Administrator Present Yes

Proper Uniform Yes

Received/Checked Roster

Yes

Ballholders Provided Yes

Overall Conduct Rating 9 (1=poor...5=avg...10=outstanding)

### Visitor Team Information

On Time Yes

Checked Player Passes

Not Required

Administrator Present Not Required

Proper Uniform Yes

Received/Checked Roster

Yes

Overall Conduct Rating 7 (1=poor...5=avg...10=outstanding)

Visitor Team Comments:

1caution, 1 ejection

### Cautions Issued

	Name	#	Pass ID	Team	Type of Misconduct	Time
1	Ashley Wickline	14		Sweet Home	12-8-1f unsporting conduct - player	8

### Send Offs / Ejections Issued

	Name	#	Pass ID	Team	Type of Misconduct	Time
1	Chloe Newport	9		Sweet Home	12-8-2d serious foul play: DGSO by foul	66

Any abnormal or unusual situations to report?

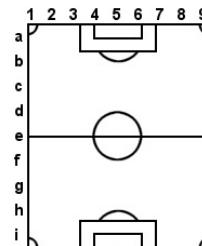
No

Serious injuries observed during the game?

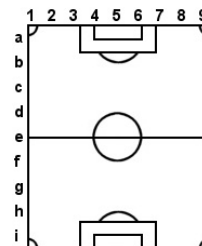
Yes - please read below

Caution Explanations

- 1 At d-8 Sweet Home # 14 (Wickline) challenged an opponent for the ball in a reckless manner; she approached the opponent at speed from behind, with no chance to play the ball, knocking the opponent over.
- Play was stopped with whistle. # 14 was shown the yellow card and caution. Play restarted with DFK for Cottage Grove.

Send Off Explanations

- 1 A shot on goal against Cottage Grove at h-5 was cleared to midfield by Cottage Grove keeper, where a Cottage Grove player gathered the ball and advanced alone toward opponent's goal. Sweet Home #9 was alone in her pursuit of the attacker, and caught her at the 18 at the top of the box and tripped her from behind as she entered the penalty area. No attempt or opportunity to play the ball was made or possible. Play was stopped. Player #9 was shown the Red Card and ejected. She left the field. Play restarted with PK for Cottage Grove.

Serious injuries observed:

Cottage Grove player # 2, Melissa Thielman was hurt.

In the 7th minute she was shielding a ball in the defensive half of the field at b-2 when an opponent attempted to play the ball. #2 fell to the ground onto her knee. She immediately complained loudly of intense pain. The clock was stopped. #2 lay on the ground for 15 minutes or so before leaving the field in an ambulance with her left leg in an air splint. Play restarted with a DFK for Cottage Grove.

