

MISOA

REFEREE REPORT

MISOA GAME REPORT

Game # 432150

Org Game ID:

Home Team: Jefferson

5

Score

Visiting Team: Milwaukie

3

Score

Competition/League: MISOA

Season: Non-League

Gender/Level/Division: Boys, JV 2, 6A

Date of Game: Wed 9/16/2015

Scheduled Time: 4:00 PM

Field Name: Delta Park VENUE

Actual Kick Off:

Field Address: 9990 N Whitaker Rd

End of Game:

Portland, OR 97217

Score at Halftime:

--	--

Home Visitor

Game Change Comments:

Venue had game scheduled for field 3, game was played on field 5.

Center Referee: Tom Simshaw

AR1: Gregory Johnson

4th Official:

AR2:

Field Information

Field Condition Great
Goals Secured Yes

Field Markings Great
Nets in Place Yes

Corner Flags in Place Yes
Approx. # of Spectators

Home Team Information

On Time Yes
Proper Uniform Yes

Checked Player Passes Not Required
Received/Checked Roster Yes

Administrator Present No
Ballholders Provided No

Overall Conduct Rating 5 (1=poor...5=avg...10=outstanding)

Visitor Team Information

On Time Yes
Proper Uniform Yes

Checked Player Passes Not Required
Received/Checked Roster Yes

Administrator Present No

Overall Conduct Rating 1 (1=poor...5=avg...10=outstanding)

Cautions Issued

	Name	#	Pass ID	Team	Type of Misconduct	Time
1	Zyshawn Strickland	10		Jefferson	12-8-1f unsporting conduct - player	17
2	Nolan Golden	7		Milwaukie	12-8-1f unsporting conduct - player	38
3	Michael DelaRosa	-		Milwaukie	12-8-1f unsporting conduct - coach	77
4	Michael DelaRosa	-		Milwaukie	12-8-1f unsporting conduct - coach	77

Send Offs / Ejections Issued

	Name	#	Pass ID	Team	Type of Misconduct	Time
1	Michael DelaRosa	-		Milwaukie	12-8-2c second caution	77

Any abnormal or unusual situations to report?

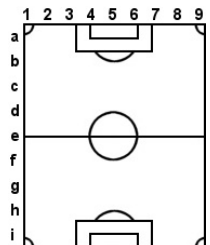
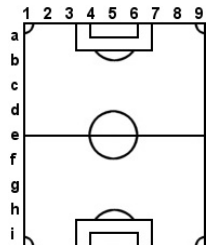
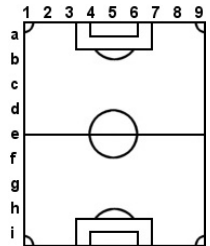
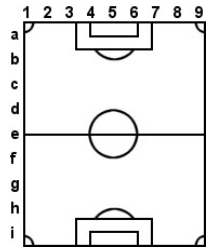
Yes - please read below

Serious injuries observed during the game?

Yes - please read below

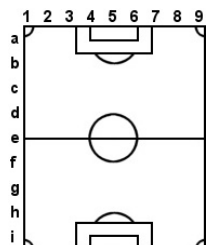
Caution Explanations

- 1 Field Location h3. After an offsides call player became engaged verbally with an opponent and attempted to chest up with him. Player continued to engage with the opponent after officials arrived to separate the players. Player was cautioned for unsporting conduct.
- 2 Field location i7. After being called for a penalty kick foul in the box player forcefully kicked the ball into the adjacent field. Player was cautioned for unsporting conduct for delaying the game.
- 3 Field location f9. Coach pulled his team from the field with 3 minutes remaining, claiming the game was unsafe for his players. Coach was cautioned for unsporting conduct.
- 4 Field Location f9. Coach refused to return his players to the field. Coach was issued a second caution for unsporting conduct and the match abandoned.



Send Off Explanations

- 1 Coach pulled this team from the field and refused to finish the contest. Coach was issued a red card and match was abandoned.

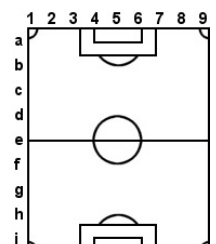


Abnormal or unusual situations to report:

Milwaukie coach pulled his team from the field in the 77th minute and game was abandoned. The same coach attempted to pull the team when a penalty kick was called for the opponents near the end of the first half, 38'. However the players wanted to continue and returned to the field. The same coach complained about the length of the first half, stating 42' minutes had been played,

unaware of high school rules regarding clock stoppage for misconduct/goals/injuries.

As I approached the Jefferson coach to report the 17' misconduct on his player he told me his player had been called a "nigger" by a Milwaukie player, threatening to pull his team if it occurred again. I relayed the details of the misconduct and told him the player's conduct merited the yellow card regardless of the instigation. As we restarted I noticed both coaches talking at the center line for 15-20 seconds and they appeared to part amiably. On no further occasion did I see the opposing coach interaction.



Serious injuries observed:

Milwaukie's #21 Obermars Martinez left the game early in the 2nd half with an apparent knee injury. From field location c4 he attempted a shot on goal that was challenged by a Jefferson defender. The two player's legs contacted on the shot follow-through, a routine soccer play that did not merit a penalty. The Milwaukie player was wearing a large knee wrap throughout the game indicating a potential existing joint issue.

